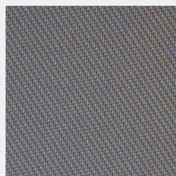


Stance

Fibreglass External Sunscreen
External Contemporary Drop Awnings
2.85m & 3.2m widths



3% OPENNESS



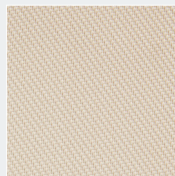
Grey



Grey - Black



Bronze



Linen



Pearl

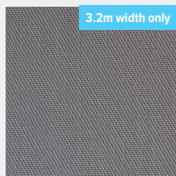


Black - Bronze



Black

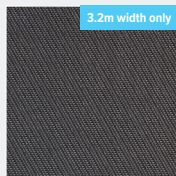
1% OPENNESS



Grey



Grey - Black





Black - Grey



Black



STANCE EXTERNAL SUNSCREEN	3% OPENNESS	1% OPENNESS
Composition:	Glass 41.5% PVC 58.5%	
Weave Construction:	Twill Weave (can be railroaded)	
Thickness:	0.80mm ± 0.10mm	0.60mm ± 0.10mm
Weight:	544 g/m2 ± 5%	474 g/m2 ± 5%
Cutting Technique:	Crush Cutting, Ultrasonic & Sewing	
Welding:	Thermal, HF, Ultrasonic & Sewing	
Stiffness:	72mm ± 5%	59mm ± 5%
Tensile Strength (AS 2001.2.3-1988)	Warp 310daN, Weft 230daN	Warp 290daN, Weft 210daN
Tearing Strength (AS 2001.2.10)	Warp 10daN, Weft 13daN	Warp 9.5daN, Weft 10daN
Width:	2850mm & 3200mm	3200mm
Colourfastness:	7 Blue Scale (AS2001.4.21)	6 Blue Scale (AS2001.4.21)
Applications:	External Contemporary Drop Awnings	

FEATURES	
	Stance External Sunscreen meets the certification requirements set by Oeko-Tex for the exclusion of harmful substances.
	Stance has been tested and is Greenguard® Gold Certified to meet strict certification criteria for low Volatile Organic Compound (VOC) emissions and is acceptable for use in environments such as schools and healthcare facilities (IEQ-11).
	Stance features Enduris™ Glass Core Technology a proprietary combination of superior-quality coatings and glass yarns, for exceptional strength and sustainable performance.

PRODUCT RANGE				
Item	Range	Width	Roll Length	Roll Weight
44.010.XXX	Stance Fibreglass 3%	2.85m	114sqm	62kg
44.011.XXX	Stance Fibreglass 3%	3.2m	105sqm	57kg
44.012.XXX	Stance Fibreglass 1%	3.2m	105sqm	50kg

FIRE RETARDANCY INFORMATION		
Independently tested to AS1530.2^ & AS1530.3*. Suitable for classes 1, 2 to 9 (a)-(c) and 10 buildings as per BCA.		
	3% Openness	1% Openness
Ignitability Index* (Range 0-20)	0	0
Spread of Flame Index* (Range 0-10)	0	0
Heat Evolved Index* (Range 0-10)	0	0
Smoke Developed Index* (Range 0-10)	5	4
Flammability Index^	1	5

THERMAL COMFORT				VISUAL COMFORT
3% Openness	Ts	Rs	As	TL
Grey	5.1	14.2	80.7	4.9
Grey - Black	3.7	12.7	83.6	3.7
Bronze	4.8	9.1	86.1	4.7
Linen	13.4	15.3	33.4	11
Pearl	7.7	39.7	52.6	6.0
Black - Bronze	6.0	5.8	88.2	5.8
Black	2.6	5.2	92.2	2.6
1% Openness				
Grey	4.8	21.6	73.6	2.2
Grey - Black	2.9	16.0	81.1	1.5
Black - Grey	0.8	10.2	89.0	0.6
Black	0.4	6.69	92.9	0.3

Solar protection indicators are laboratory-tested. The most relevant and widely used thermal comfort factors are listed above.

The fenestration property tests were conducted in accordance with EN 410 (1998), EN 14501:(2005), and EN 14500:(2008).

THERMAL COMFORT

Fabric Only
Ts Solar Transmittance (%)
Rs Solar Reflectance (%)
As Solar Absorbance (%)
Solar radiation is always partially transmitted through, absorbed or reflected by the fabric. The sum of all 3 equals 100. Ts + Rs + As = 100 % of solar energy.

VISUAL COMFORT

Fabric Only
TL Light Transmittance (%)

For more information contact us on:
turnilscollage.com.au

Not all colours are available for all widths, check fabric label for width information.

© Copyright 2019 Hunter Douglas Limited [A.B.N. 98 009 675 709]™ Hunter Douglas Limited has applied for the registration of the Trade Mark Enduris. Colorbond® is a registered Trade Mark of BlueScope Steel Limited. Greenguard® is a registered Trade Mark of UL LLC a Delaware limited liability company. Oeko-Tex is a registered Trade Mark of OTI-Institut für Ökologie, Technik und Innovation GmbH.

Note: *Warranty Conditions apply; refer to www.turnilscollage.com.au for more details. 08/2019