

SUNWORKER OPEN

Enhanced visual comfort
allowing natural light to filter through



SUNWORKER OPEN

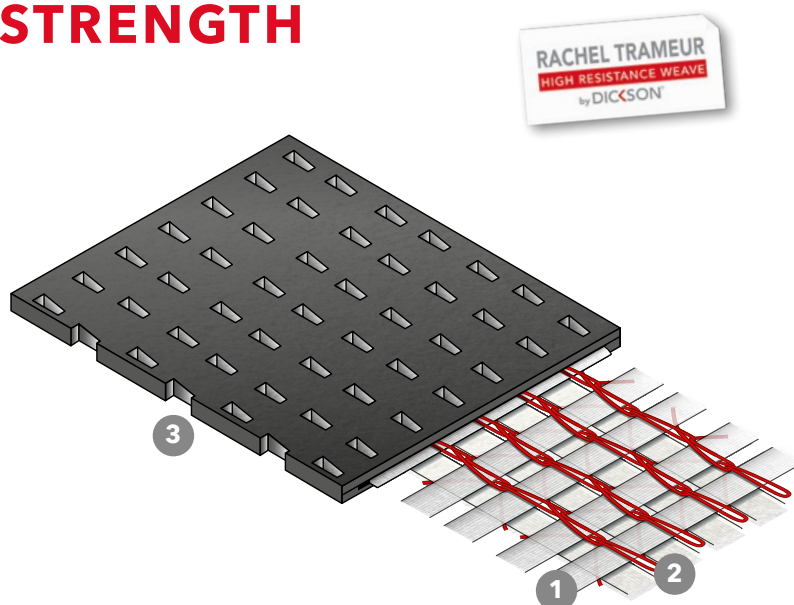
ENHANCED VISUAL COMFORT

SUNWORKER OPEN solar-protective fabric is the ideal compromise between visibility and optimal brightness. It combines transparency, resistance and thinness with visual and thermal comfort.

Suitable both for the services industry and the residential sector, the fabric offers an effective way of meeting the objectives laid down in the EU Directive on the Energy Performance of Buildings, as it repels at least 78% of the sun's rays.



AN INNOVATIVE WEAVING TECHNIQUE FOR UNPARALLELED STRENGTH



- 1 Textile ply formed by weaving high-strength polyester yarn.
- 2 Binder yarn secures the textile ply but allows the threads to move independently of each other, thereby distributing and absorbing the mechanical energy in the event of tearing.
- 3 A special coating that protects colours from UV rays and inclement weather.



SUNWORKER OPEN

5 GOOD REASONS TO CHOOSE A SUNWORKER OPEN FABRIC

1 VISUAL COMFORT

a fabric with a more open weave to allow more light to filter in

SUNWORKER OPEN has a 15% open weave, enhancing user well-being by delivering optimized visual comfort :

- Generous and uniform natural light
- Clearer visibility to outside

Optimized protection :

- Repels 69 to 86% of the sun's rays
- Controls glare

Recommended for :

- North/north-east/north-west exposures, for which the chosen form of solar protection must provide sufficient natural light
- Southern exposures, for which the presence of vertical light justifies the use of a more open weave for enhanced visual comfort

4 MAXIMUM RESISTANCE AND SAFETY

a fabric that stands the test of time

The highest resistance on the market :

- Unparalleled mechanical strength thanks to the Rachel Trameur-type weave



- A special coating that protects colours from UV rays and inclement weather

Maximum safety of use, both indoors and outdoors :

- Guaranteed fire-retardant
- Certified by official accredited bodies

5 COST-EFFECTIVE

a thin and discreet fabric

A thin, lightweight fabric that :

- Fosters ease-of-use
- Reduces investment costs by requiring a less bulky supporting framework

An extra-wide size resulting in **reduced manufacturing costs**

A profitable solution that :

- Generates **energy savings and cuts lighting costs**
- Reduces the building's environmental footprint throughout its lifetime

2 THERMAL COMFORT

controlled solar gain

SUNWORKER OPEN fabric helps foster excellent thermal performance :

- Repels up to 85% of heat
- Acts as a barrier to radiation from the window (minimizing cold gain in the winter and excessive heat gain in the summer)

SUNWORKER OPEN has a 15% open weave, which:

- Fosters **better ventilation** and the evacuation of hot air in the summer, thereby minimizing the risk of thermal breakage
- Allows **sunlight to filter through in the winter**, when the sun is low in the sky

3 AESTHETICS

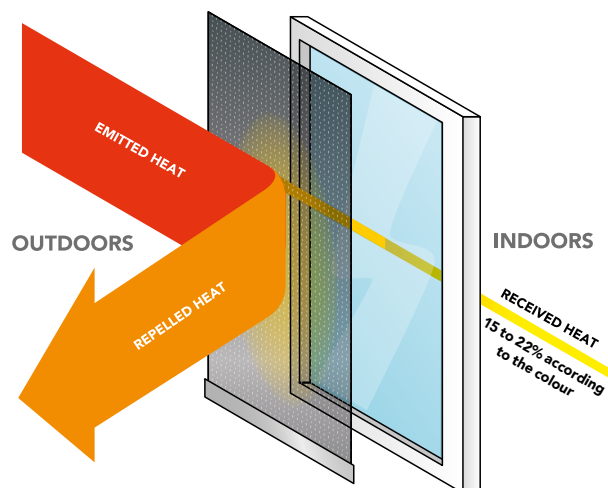
a fabric that fosters style

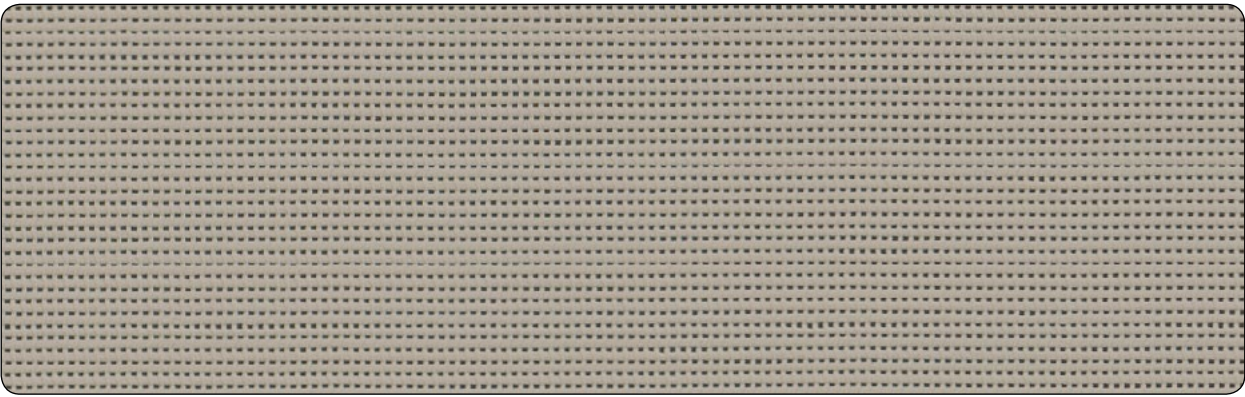
A textile with a **smooth, even texture** that :

- Harmoniously diffuses light
- Enhances the building's architectural design

Available in **extra-wide sizes** to offer unlimited design options

Comes in a range of **coordinating colours that complement the other fabrics** in the SUNWORKER range, guaranteeing a perfectly harmonious result regardless of the fabric chosen (Sunworker, Cristal, Opaque, Metal)





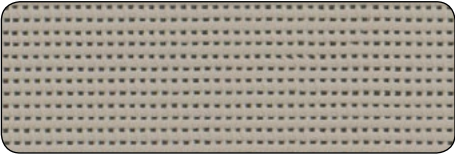
SWN M006
PEARL



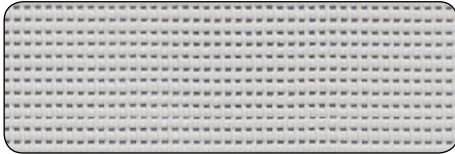
SWN M005
WHITE



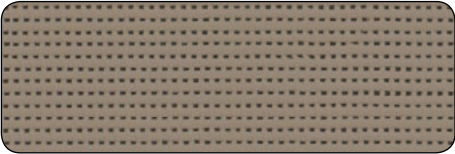
SWN M939
ELEPHANT



SWN M654
GREY



SWN M719
TAUPE



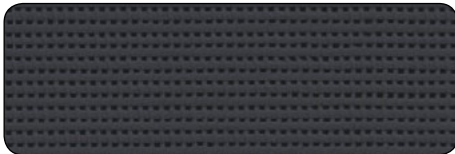
SWN M652
SILVER



SWN M715
BISON



SWN M392
CHARCOAL



THERMAL AND VISUAL PERFORMANCE
according to standards EN 410, EN 14500, EN 14501 and EN 13363-1

Colour no.		Solar factors		Energy efficiency			Visual performance			UV-blocking performance	Colour equivalents	
		gtot* ext.	gtot* int.	Te	pe	αe	τV	ρV	αV	τUV	NCS	RAL
	SWN M005	0,22	0,38	0,32	0,6	0,08	0,31	0,68	0,01	0,17	S 0500-N	9016
	SWN M006	0,22	0,40	0,31	0,53	0,16	0,27	0,55	0,18	0,15	S 1005-Y10R	9002
	SWN M392	0,19	0,55	0,18	0,06	0,76	0,18	0,06	0,76	0,18	S 7500-N	7016
	SWN M652	0,17	0,50	0,17	0,23	0,6	0,16	0,26	0,58	0,15	S 4500-N	7045
	SWN M654	0,19	0,44	0,24	0,42	0,34	0,22	0,47	0,31	0,15	S 1500-N	7047
	SWN M715	0,15	0,54	0,14	0,09	0,77	0,14	0,09	0,77	0,14	S 7005-Y80R	+/- 8019
	SWN M719	0,17	0,51	0,17	0,20	0,63	0,16	0,20	0,64	0,15	S 4005-Y20R	7048
	SWN M939	0,16	0,48	0,17	0,29	0,54	0,16	0,32	0,52	0,15	S 3005-Y20R	7030

Te : solar transmission - pe : solar reflection - αe : solar absorption - τV : visual transmission - ρV : visual reflection - αV : visual absorption - τUV : UV transmission -
* gtot : solar factor for the combination of fabric + reference glazing C (double glazing 4+16+4 with low-emission layer on side 3, Argon filling; U=1.2 W/m2K; g=0.59).
The thermal and visual characteristics of our products are measured using standards EN 410, EN 14500, EN 14501 and EN 13363-1. As the quality of these measurements is critical to a project's success, measurements taken internally cannot be relied upon alone. Dickson therefore entrusts these measurements to an official accredited laboratory, CSTC/WTCB (Centre Scientifique et Technique de la Construction), which produces an independent report officially establishing the product's characteristics.

SUNWORKER RANGE

TOTAL FLEXIBILITY

Give your project a sense of consistency and harmony by mixing and matching the various finishes and coordinating colours.



> **SUNWORKER**
Optimal visual and thermal comfort

> **SUNWORKER METAL**
Enhanced thermal performance



> **SUNWORKER OPAQUE**
Blackout awning, the cost-effective alternative to rolling shutters



> **SUNWORKER CRISTAL**
The ultimate waterproof awning



> **SUNWORKER OPEN**
Enhanced visual comfort allowing natural light to filter through

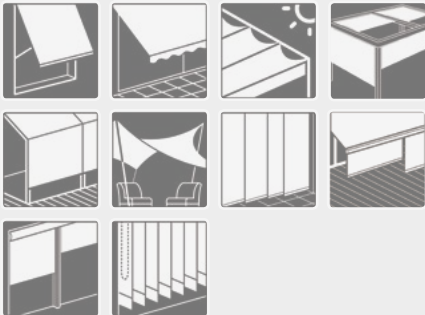


For the general terms of warranty, please see www.dickson-constant.com

Sunworker fabrics have a small carbon footprint and are Greenguard-certified, helping create a healthier and less polluting indoor environment. Installing a Sunworker fabric can consequently earn points towards green building certification.

SUNWORKER OPEN FABRIC FOR WHEN THE NUMBER ONE PRIORITY IS LIGHT

Can be used both indoors and outdoors, at temperatures ranging from -30°C to 70°C.



TECHNICAL SPECIFICATIONS

	Weight NF EN ISO 2286-1	M2 (NF 92503) - B1 (DIN 4102)	Openness factor	Thickness NF EN ISO 2286-3	Tearing strength in daN/5cm DIN 53363	Tensile strength in daN/5cm NF EN ISO 13934-1	Width/roll length
SUNWORKER OPEN	360 g/m2	M2 - B1	15%	0,55mm	Warp 50 Weft 30	Warp 260 Weft 180	305cm/30m

These technical specifications are average values with a tolerance of +/- 5%. All the specifications featured in this brochure are for information only and do not constitute a guarantee. Their sole purpose is to provide a general description of the products. They may not be construed as a contractual commitment on our part. It is the customer's responsibility to check the validity of this information and the compliance of the merchandise received prior to installation, carrying out preliminary tests if necessary. It is also his/her responsibility to ensure that the selected product is suitable for its intended use. The customer is responsible for using the product under normal foreseeable conditions and in accordance with all safety and environmental regulations currently in force in the place of use as well as the professional standards of his/her sector. Dickson Constant reserves the right to withdraw from the market any of the products that feature in this brochure and/or to amend the related specifications.

SERVICES

- EPD (Environmental Product Declaration-EN 15804) and LCA (Life-Cycle Analysis) are available upon request
- Personalized simulation of the thermal performances of your projects : prescription@dickson-constant.com
- Advisory service available to offer guidance and suggest the most appropriate solutions for your project, in line with your specifications : prescription@dickson-constant.com

10 rue des Châteaux
BP 109 - Z.I. La Pilaterie
59443 Wasquehal Cedex - France
www.dickson-constant.com
Tél. +33 (0)3 20 45 59 59
Fax +33 (0)3 20 45 59 00



Performance fabrics for
Solar protection
Outdoor furniture
Indoor furniture
Marine furnishing
Flooring

