

SOLAR FABRiCS

AUSTRALIAN
COLLECTION


DICKSON®
the art of weaving by Dickson®

WAS

612 8068 9293





Dickson : a history of expertise

Building on more than 200 years of expertise, Dickson® is an established player on the woven fabric market.

Thanks to the know-how of its employees, Dickson continues to be the benchmark for technical textiles. Having made innovation a keystone of its philosophy, it always adapts to the latest market trends.

Dickson is recognised the world over for the quality of its canvases, which are composed of millions of interwoven and intertwined threads.

ESSENTIAL

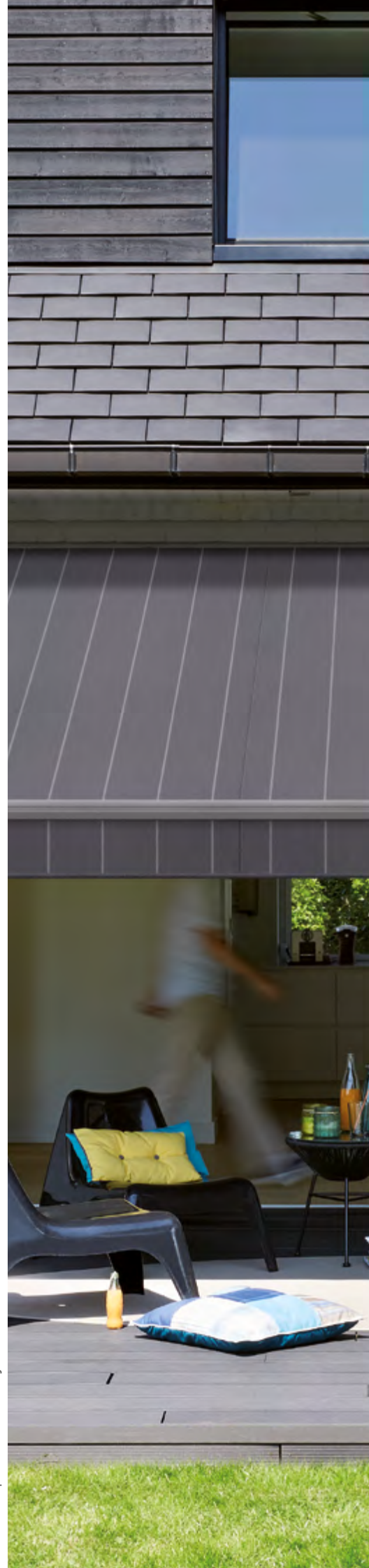
“

*95 colours to express your creativity.
Available in 95 hues, from trendy solids
to more contemporary stripes, Dickson
offers the widest range on the market.*

*Divided into six colour groups, our wide
fabric selection allows you to match or
fully contrast exteriors with interior
décors.*

*A range of colours for even the boldest
of designs. ”*

Naples Dark Grey - D308







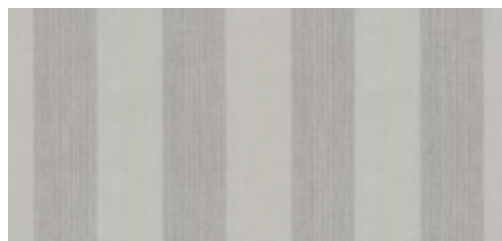
Slate - 8203



Chalk Tweed
U389



Naples Light Grey
D304



Pencil Grey
D320



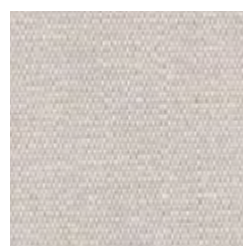
Grey
6088



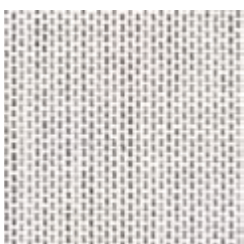
Lead Chiné
8396



BS Grey
8907



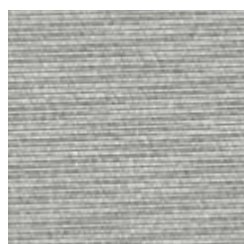
Stone
6196



Marble
U409



Grey Tweed
U190



Pewter
7552



Craft Grey
D328



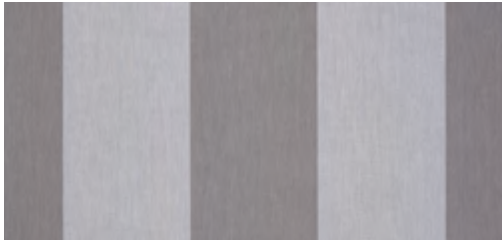
Sienna Dark Grey
8931



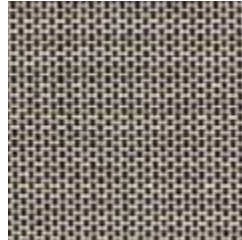
Titanium
U408



Manosque Grey
D309



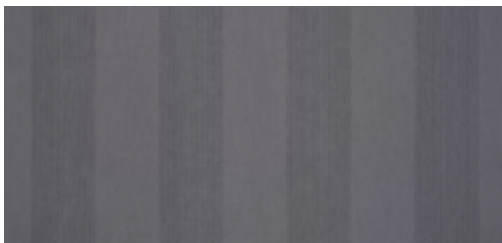
Wide Chiné Grey
D298



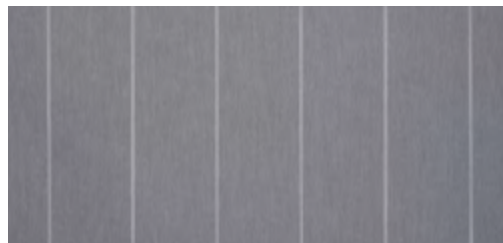
Platinum
U407



BS Slate
8922



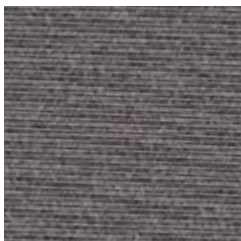
Pencil Dark Grey
D319



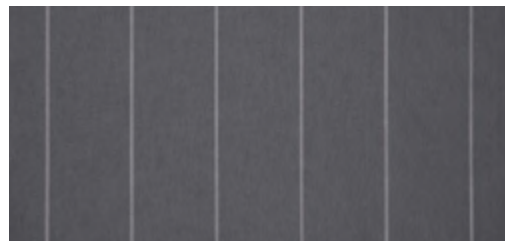
Naples Grey
D113



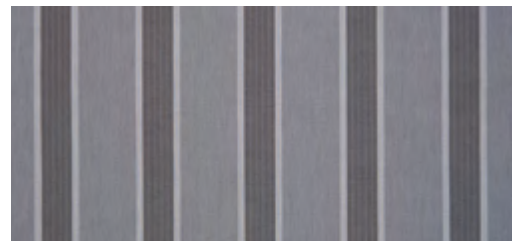
Flanelle
U104



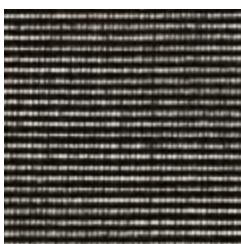
Slate
8203



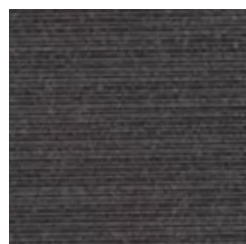
Naples Dark Grey
D308



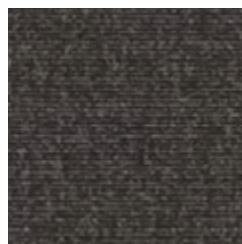
Manosque Dark Grey
D108



Charcoal Tweed
7330



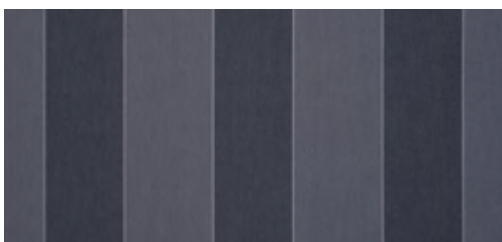
Carbone
U171



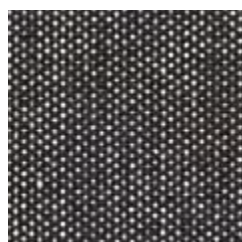
Basalt Chiné
U095



BS Black & White
C022



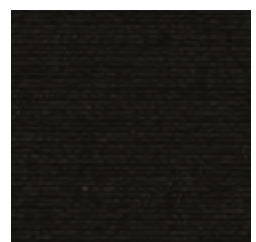
Color Block Black
D330



Steel
U406



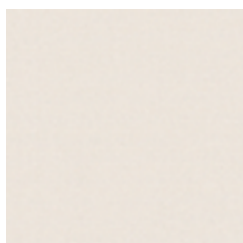
Macadam Tweed
U373



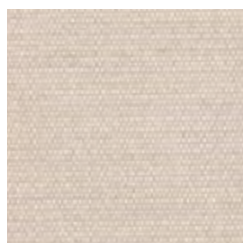
Black
6028



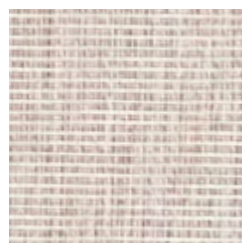
White
0001



Natural
7133



Raw
6020



Beige Tweed
U189



Linen
8904



Naples Linen
D307



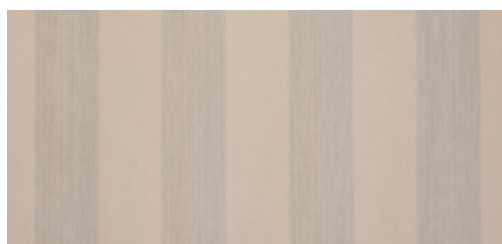
Clay
U387



Hardlot Beige
8935



Papyrus Tweed
U370



Pencil Beige
D324



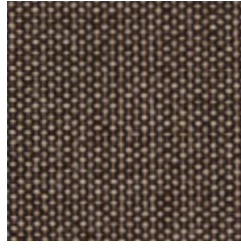
Taupe
7559



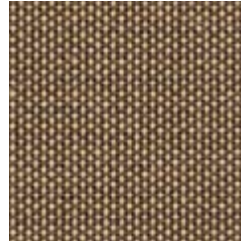
Mink Tweed
U137



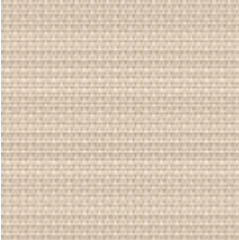
Sienna Beige
D100



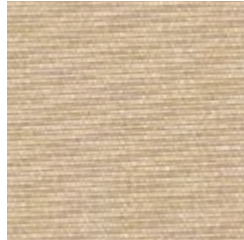
Thatch
U235



Mocha
U410



Gypsum
U335



Dune
0681



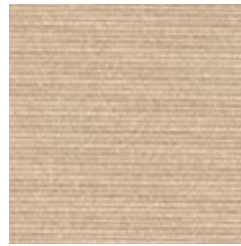
Suede
U337



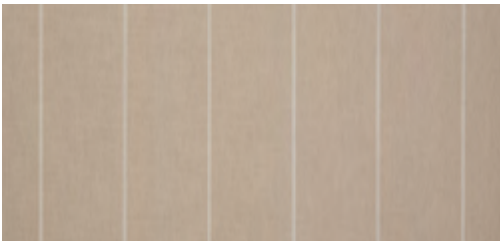
Heather Chiné
8779



Gazelle Tweed
U140



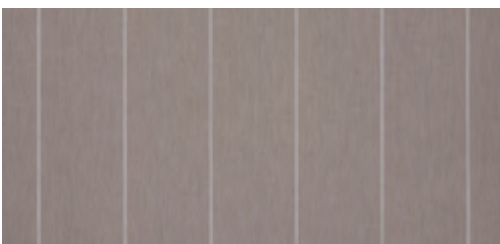
Beige
8902



Naples Heather
D305

“

Resolutely timeless, natural tones have shifted towards taupe hues. Browns have been reworked with a sophisticated eye to produce designs such as Color Block Brown where regular hints of beige bring the surface to life.”



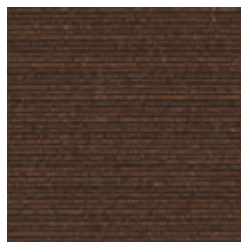
Naples Hemp
D306



Manosque Beige
D103

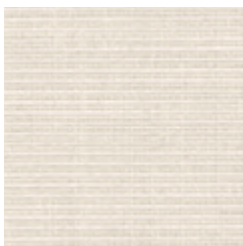


Color Block Brown
D334



Brownie
U224

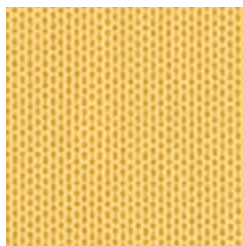




Alabaster Tweed
U136



Pearl
7972



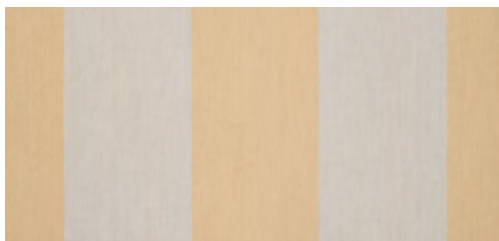
Maize
U415



Harlot Yellow
8612



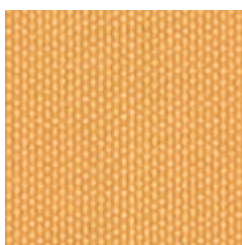
Manosque Yellow
D107



Wide Chiné Yellow
D300



Yellow
6316



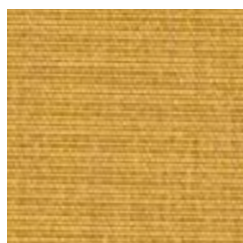
Honey
U414



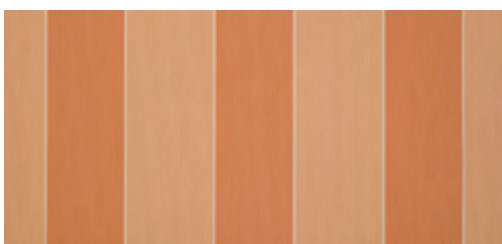
*Sunny colours create a warm
ambiance under the awning
for unrivalled luminosity. ”*



BS Yellow
8553



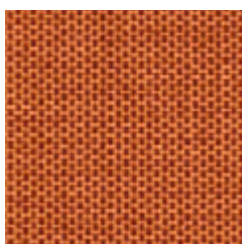
Gold
U105



Color Block Yellow
D333



Orange
0018



Pumpkin
U413



Color Block Orange
D332



Red - 0020 / Slate - 8203



Red
0020



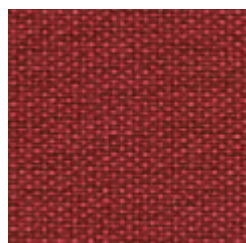
Color Block Red
D335



Sienna Red
8211

“

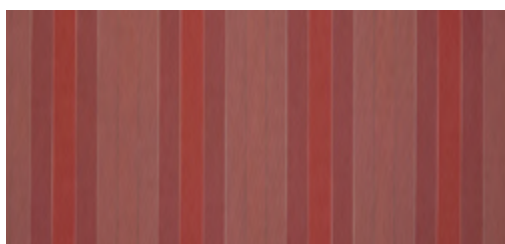
Any shade of red is suitable for façades when paired with colours that softens its impact, such as white, grey or another neutral shade. Red also works well with warm tones like orange. ”



Carmine
U411



Burgundy
8206



Craft Red
D329



Paris Red
3914





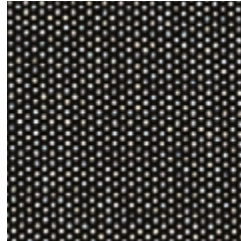
“

Blue is easy to match. It goes with practically any colour, light or dark.”

BS Navy
8556



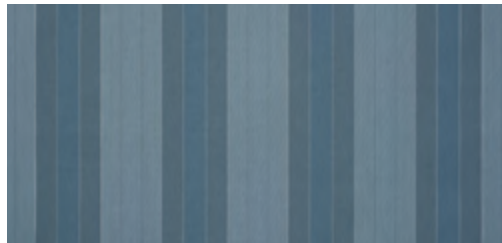
Deep Navy
8238



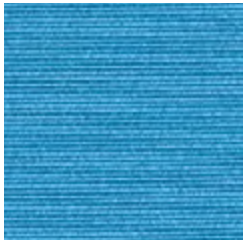
Pepper
U343



Pencil Blue
D321



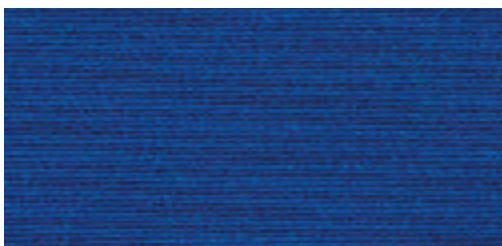
Craft Blue
D327



Azure
U388



BS Blue
8910



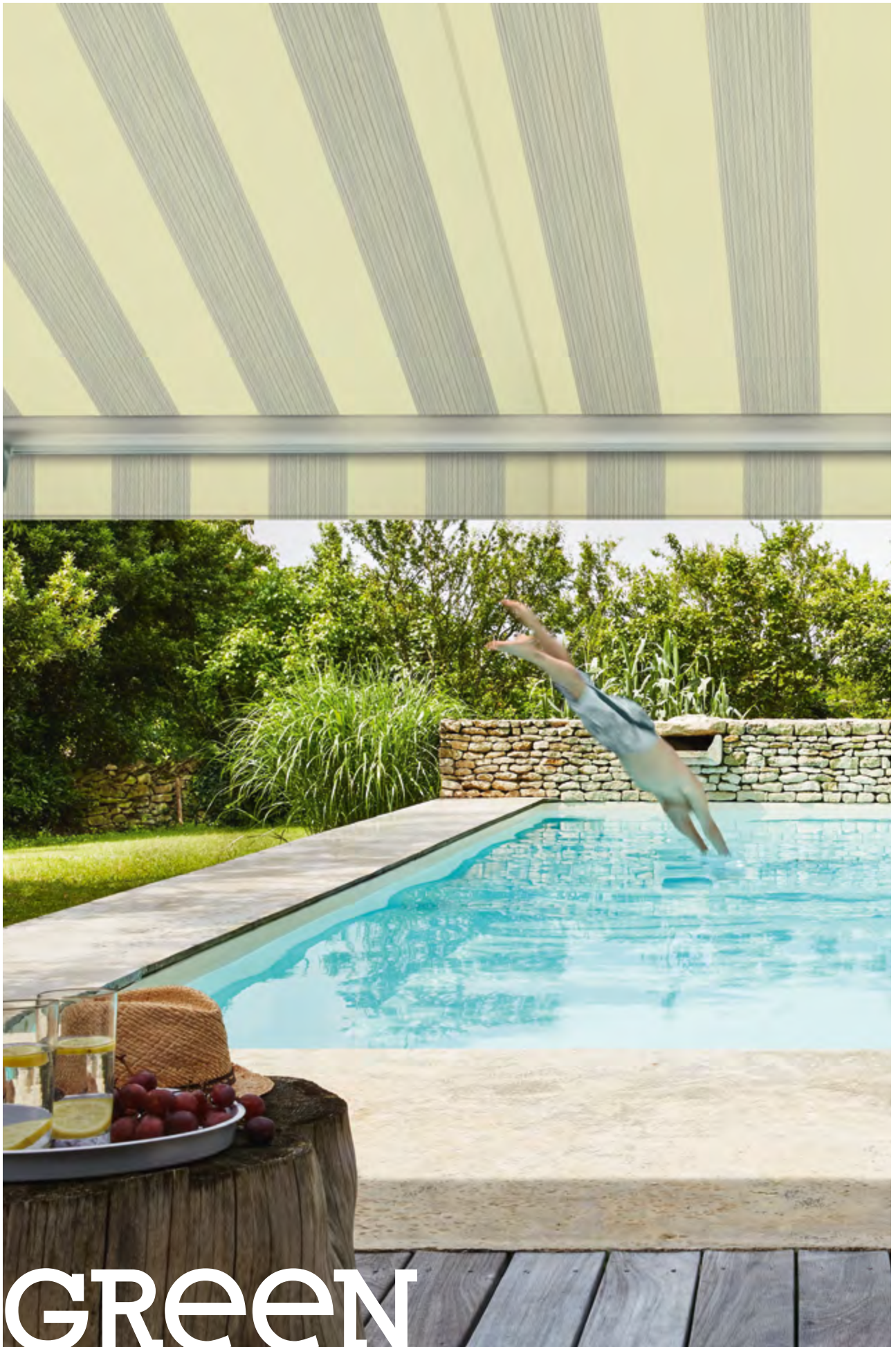
Royal Blue
0017



Ocean Blue
7264



Color Block Blue
D331

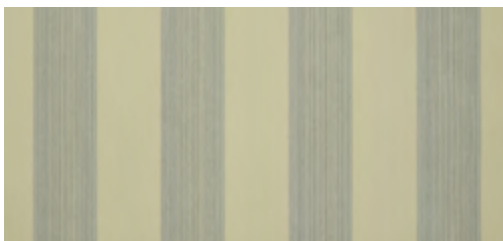




Fern
U321



Amande
7244



Pencil Green
D322



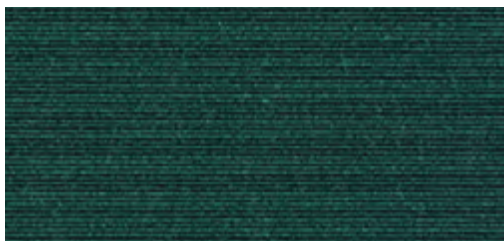
Hardelet Green
8614

“

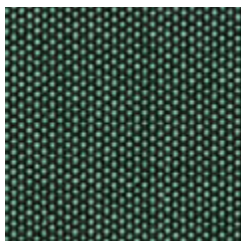
Green is a soothing colour that procures a sense of peace and serenity. It adds a note of freshness and well-being to any terrace. „



Manosque Green
D104



Forest Green
6687



Larch
U417





Dickson quality Guarantee

Colours that last

The solution-dyed yarn used to produce our fabrics offers long-lasting resistance to UV rays and weather conditions. Even when exposed to strong sunlight, they retain their dazzling colours... for a very long time.

10-year fabric warranty

Its high-performance fibres, treatments and weaving processes allow Dickson to guarantee some of its fabrics for up to 10 years.

French made

Building on its unique expertise, Dickson produces all of its fabrics in Wasquehal in northern France (59).

Visual and thermal comfort

Dickson® fabric reduces glare and heat by up to 95% to eliminate the greenhouse effect, keep your interiors feeling fresh and, depending on the colour, block 90% to 100% of UV rays.

Easy to maintain

CLEANGARD® water- and dirt-resistant finish ensures each of our fabrics is highly resistant to stains, grease and water.
Low maintenance guaranteed!

Textiles that protect people and the planet

Awarded the OEKO-TEX label (class II, products in direct contact with the skin), Dickson fabrics are produced without hazardous substances and do not pose a threat to health, the skin or the environment.



UV resistant
4-5/5 - ISO 105 B04



**Water and stain
resistant***



**Protects against UV rays
and heat**



Tear resistant



Mould resistant



Easy to maintain



Goodearl Bailey

goodearlandbailey.com.au

* Each range's specifications vary according to the product.

Edition February 2017 – SAS DICKSON CONSTANT - capital 12.640.000 euros - 381 347 970 R.C.S. Lille Métropole
Photos : Landry Laurie, Remi Dargen - photos are not contractual - Glen Raven™ is a trademark of Glen Raven, Inc. - Dickson
Constant is a Glen Raven company